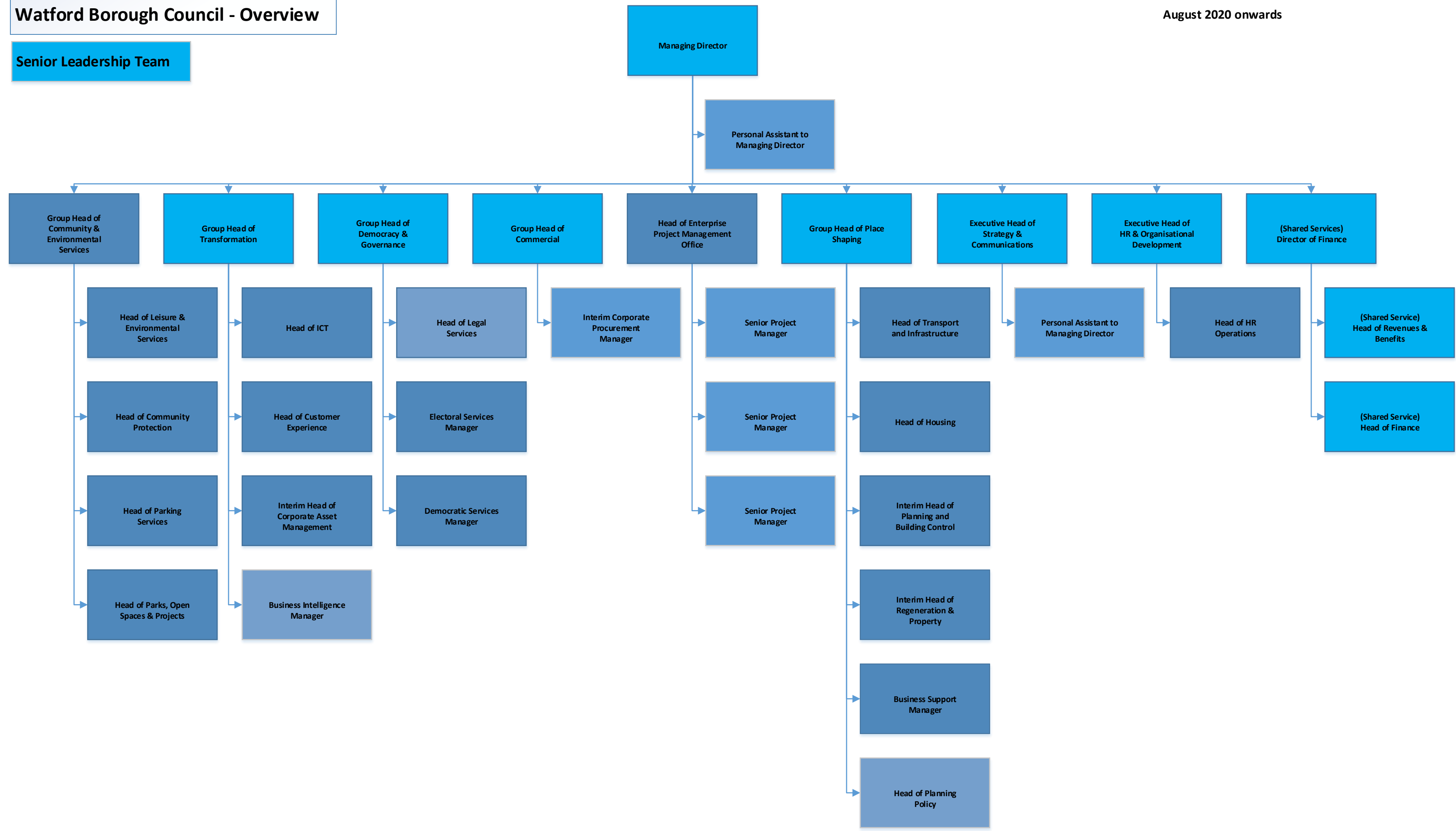


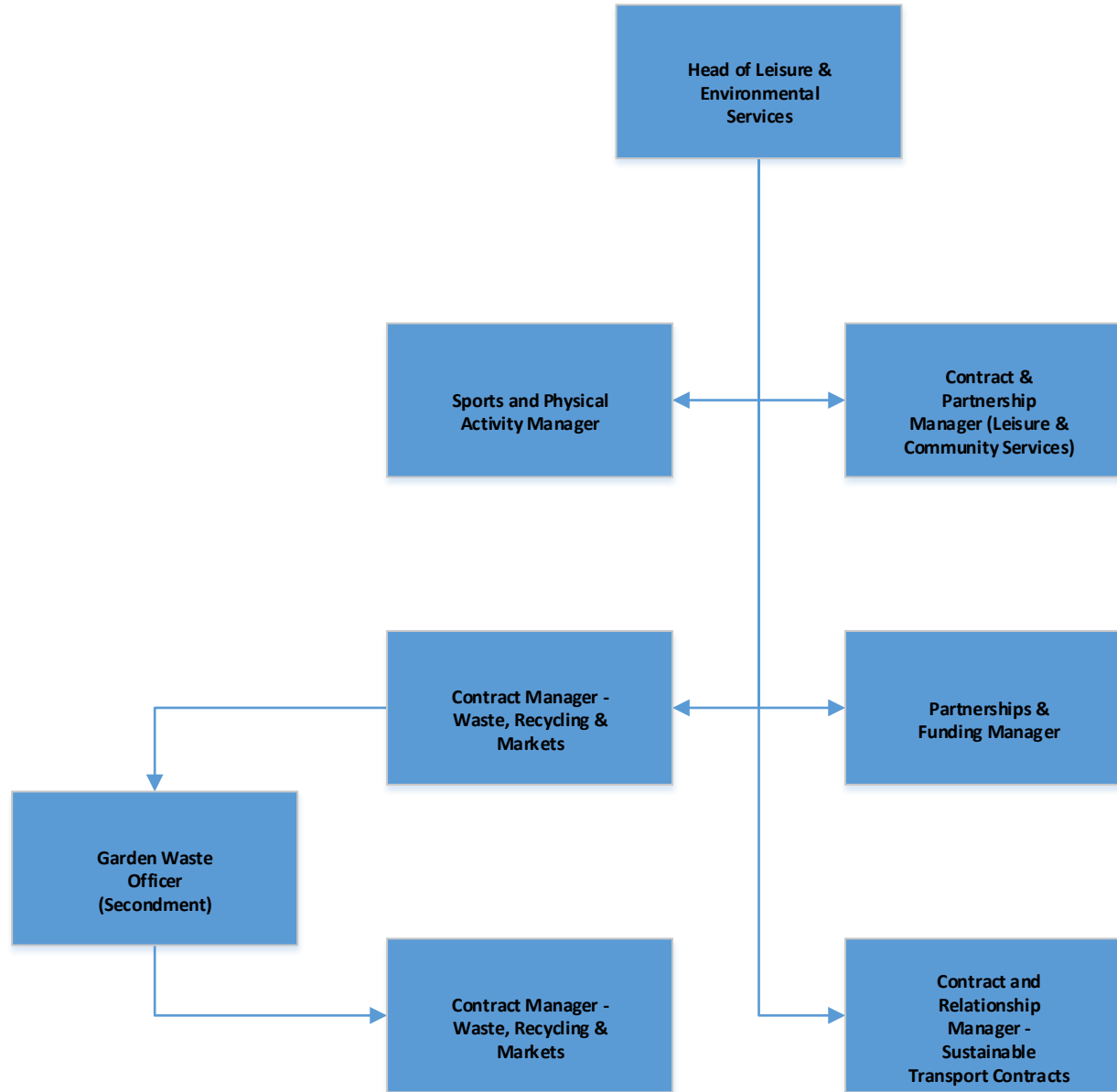
Watford Borough Council - Overview

August 2020 onwards

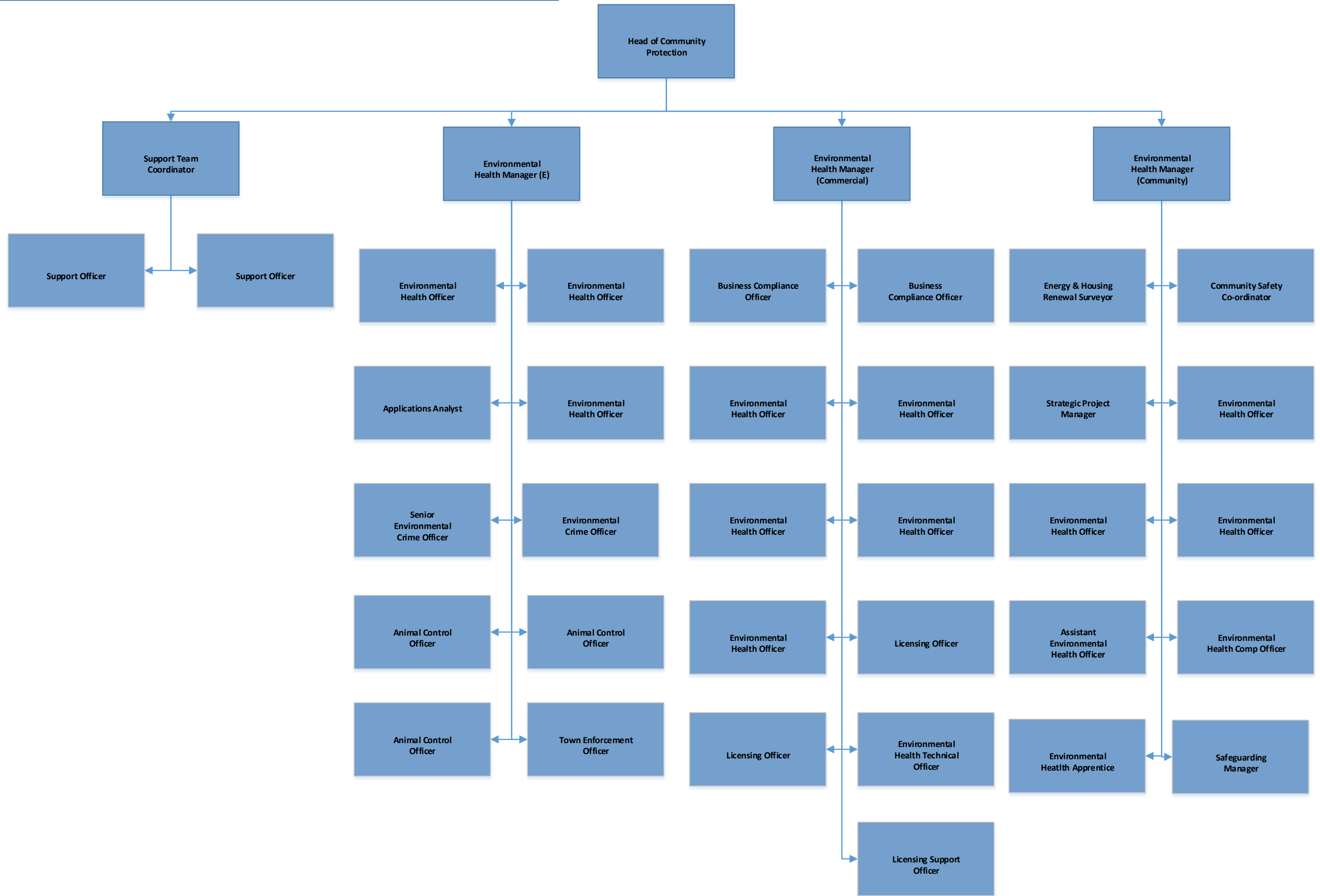
Senior Leadership Team



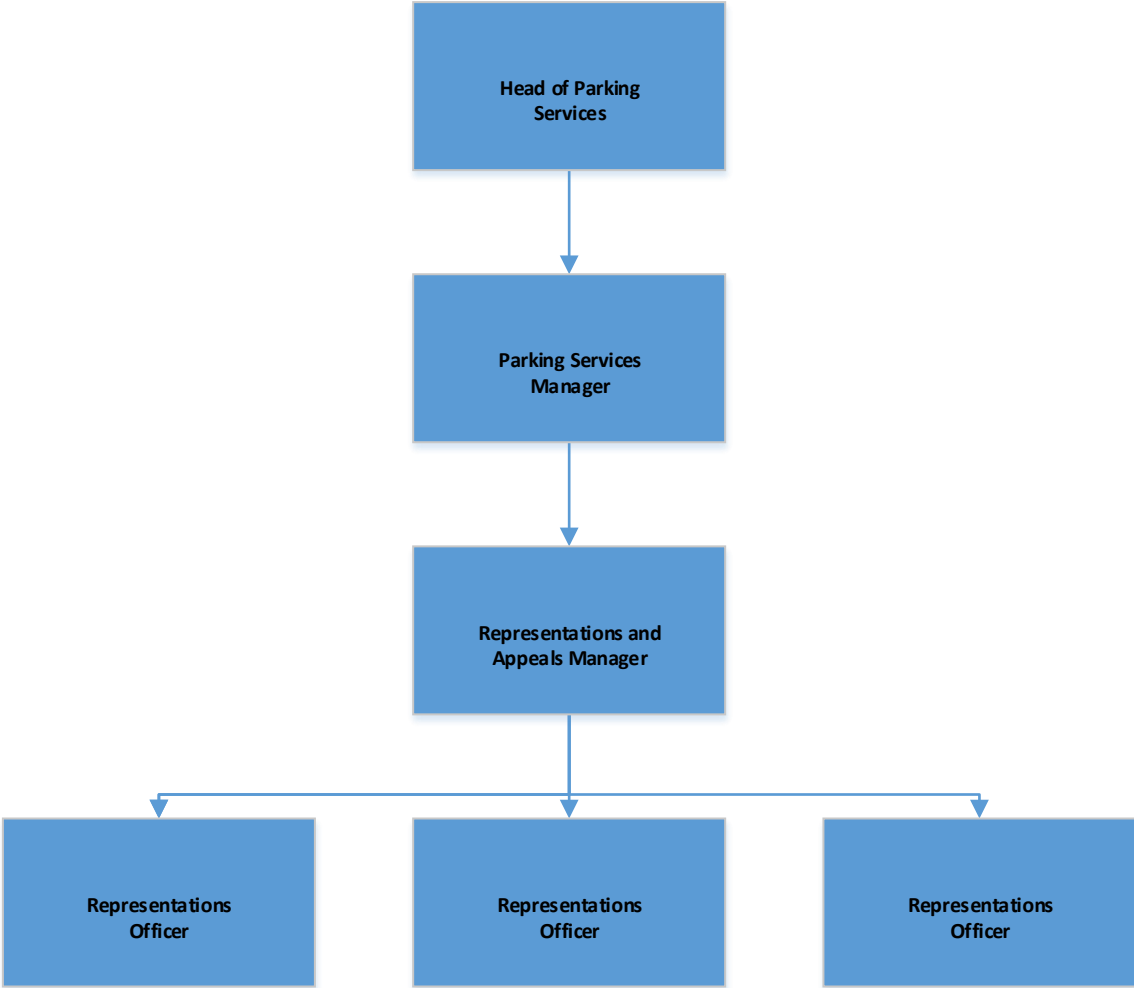
Community & Environmental Services : Leisure, Community & Environmental Services



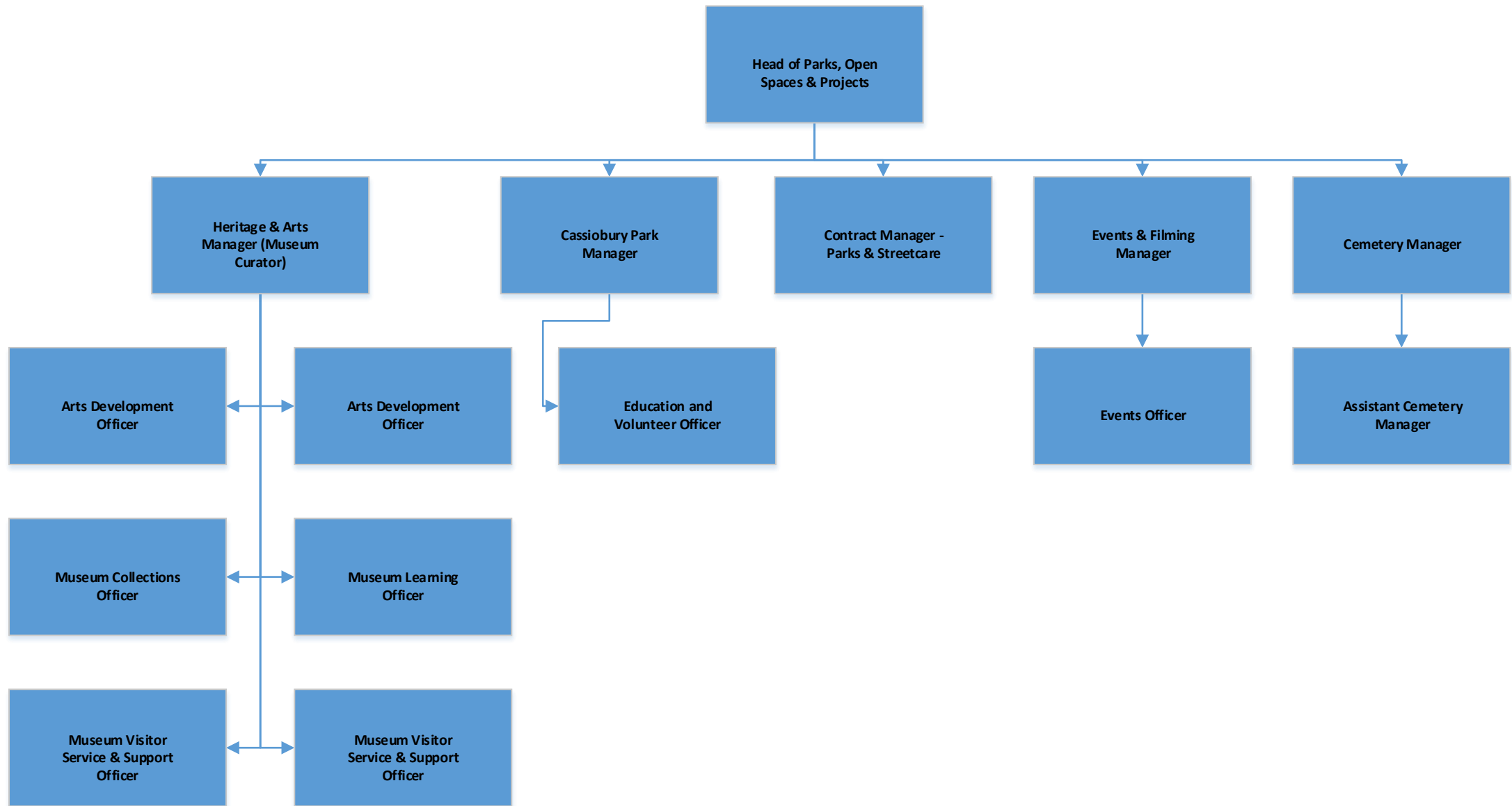
Community & Environmental Services : Community Protection



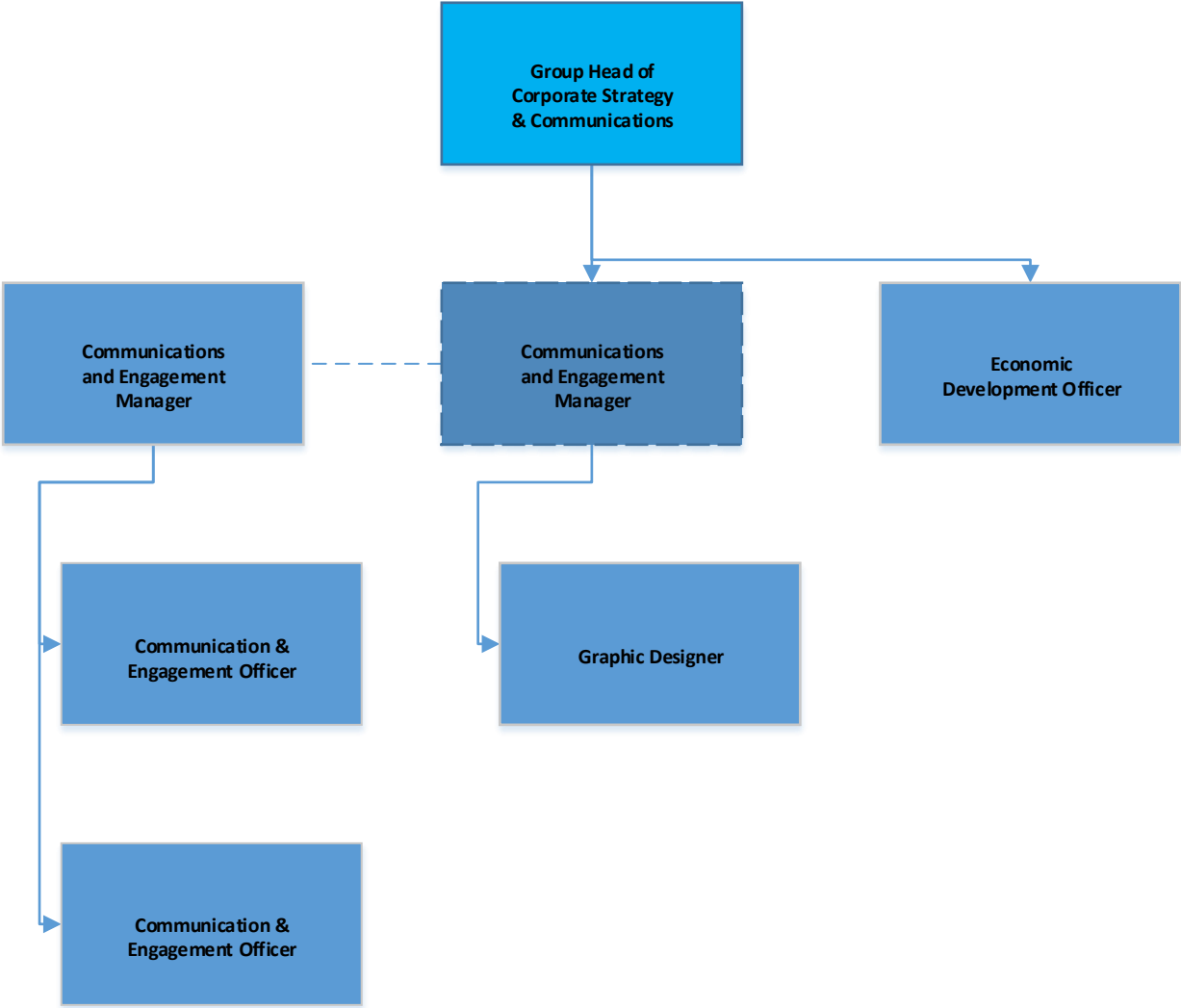
Community & Environmental Services : Parking Services



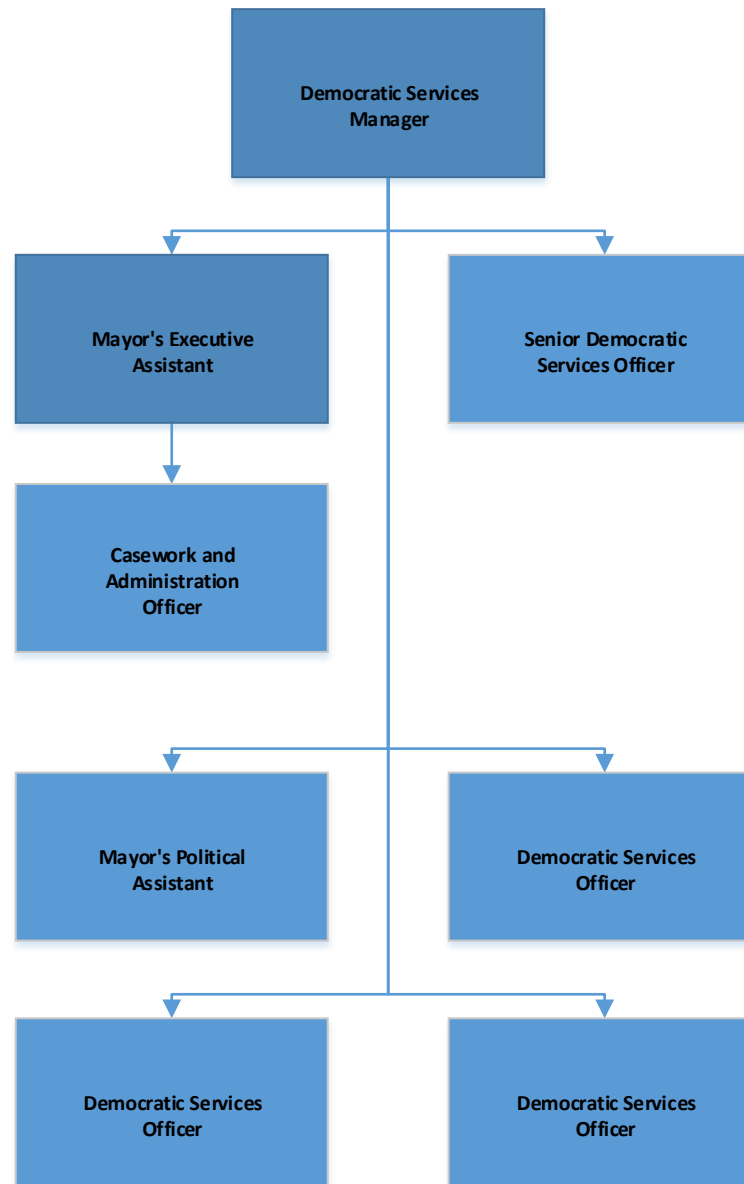
Community & Environmental Services : Parks, Open Spaces & Projects



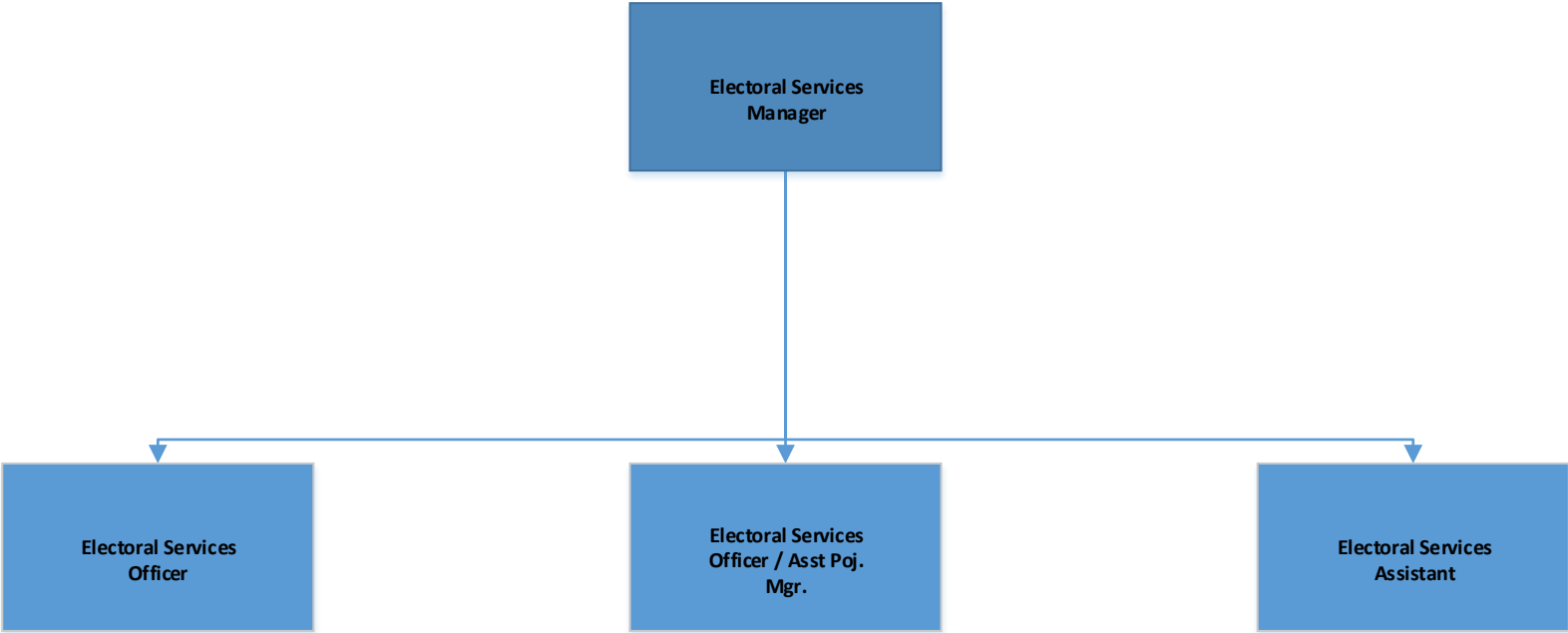
Corporate Strategy & Communications : Communications & Engagement



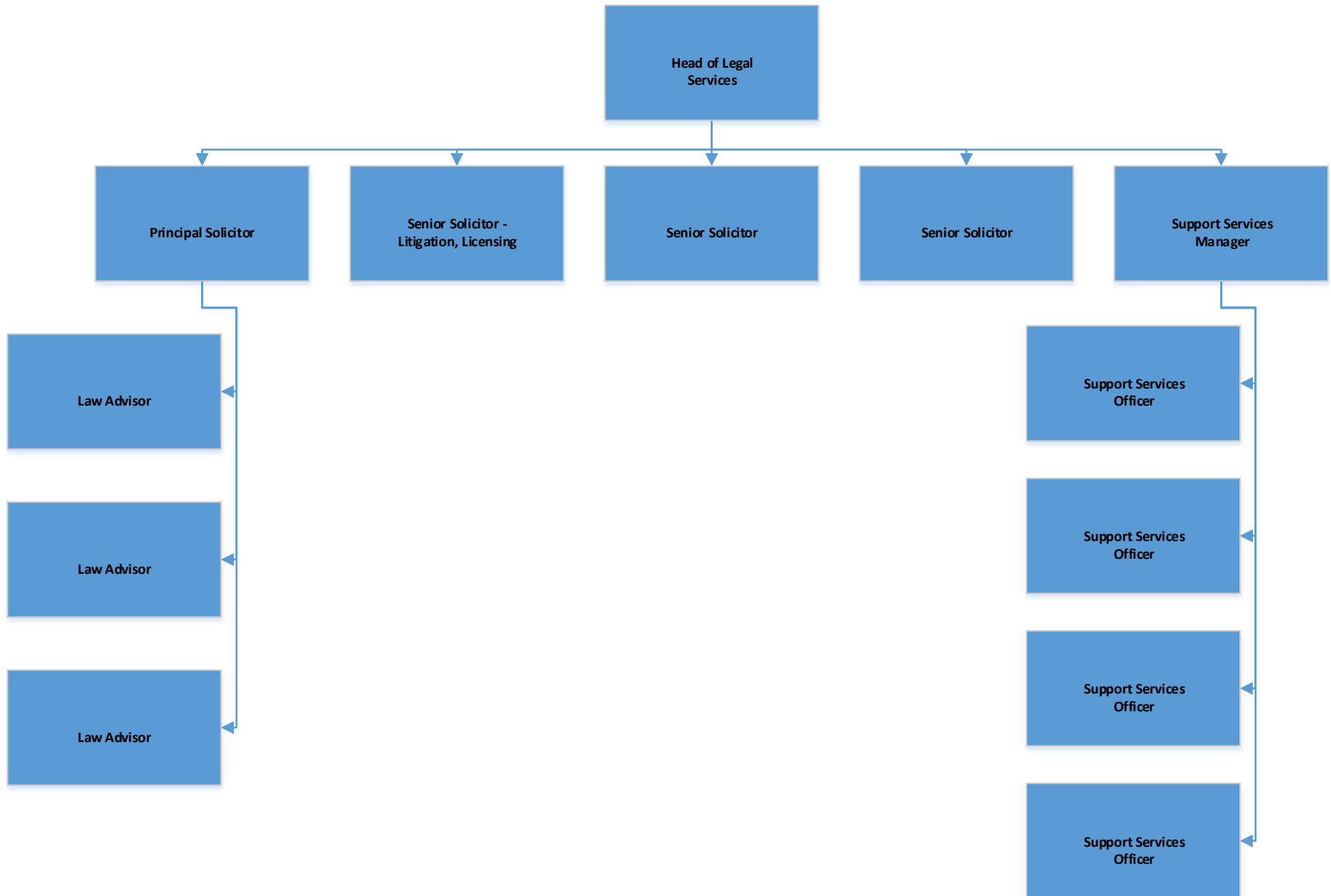
Democracy & Governance : Democratic Services



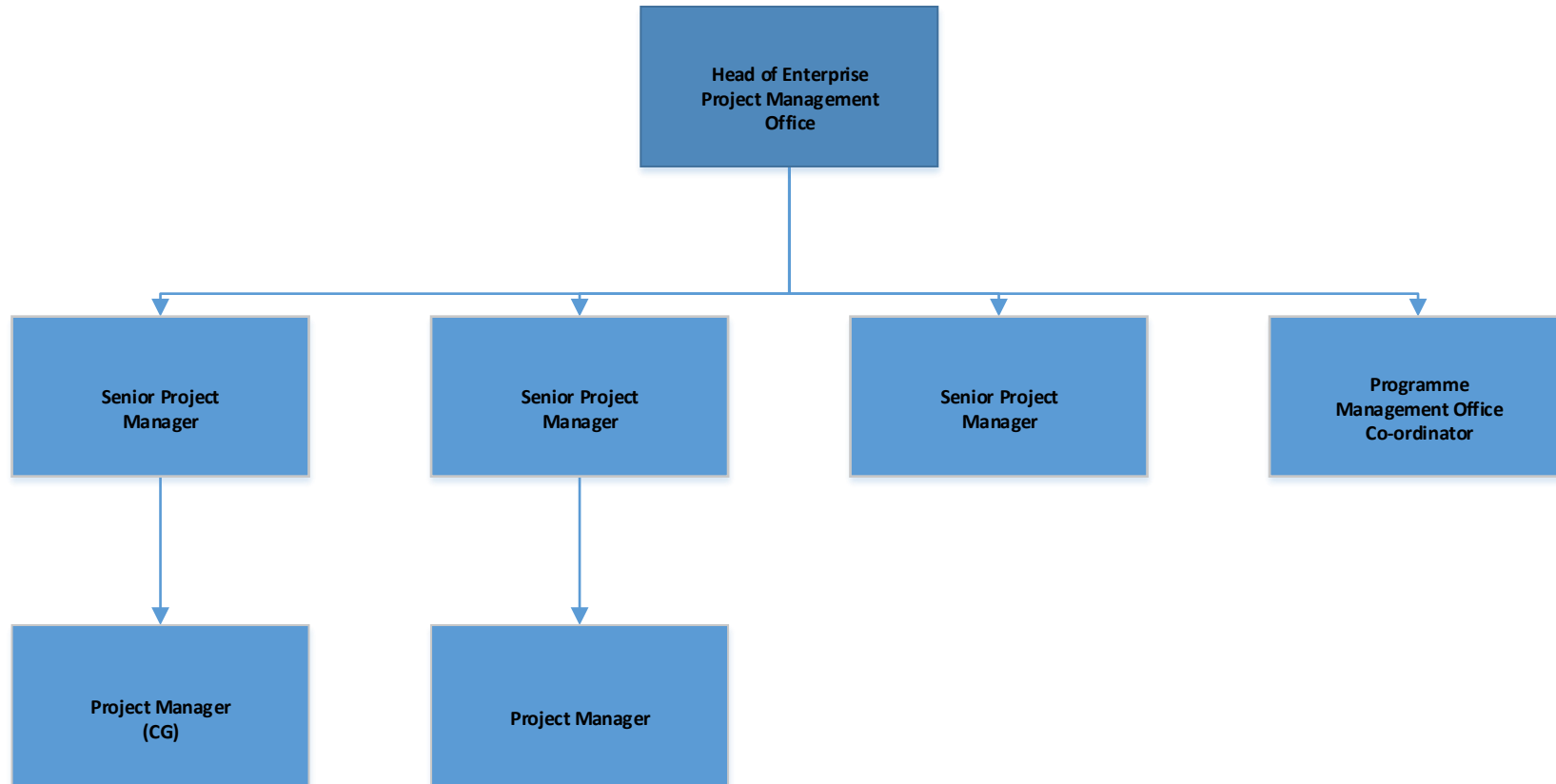
Democracy & Governance : Elections



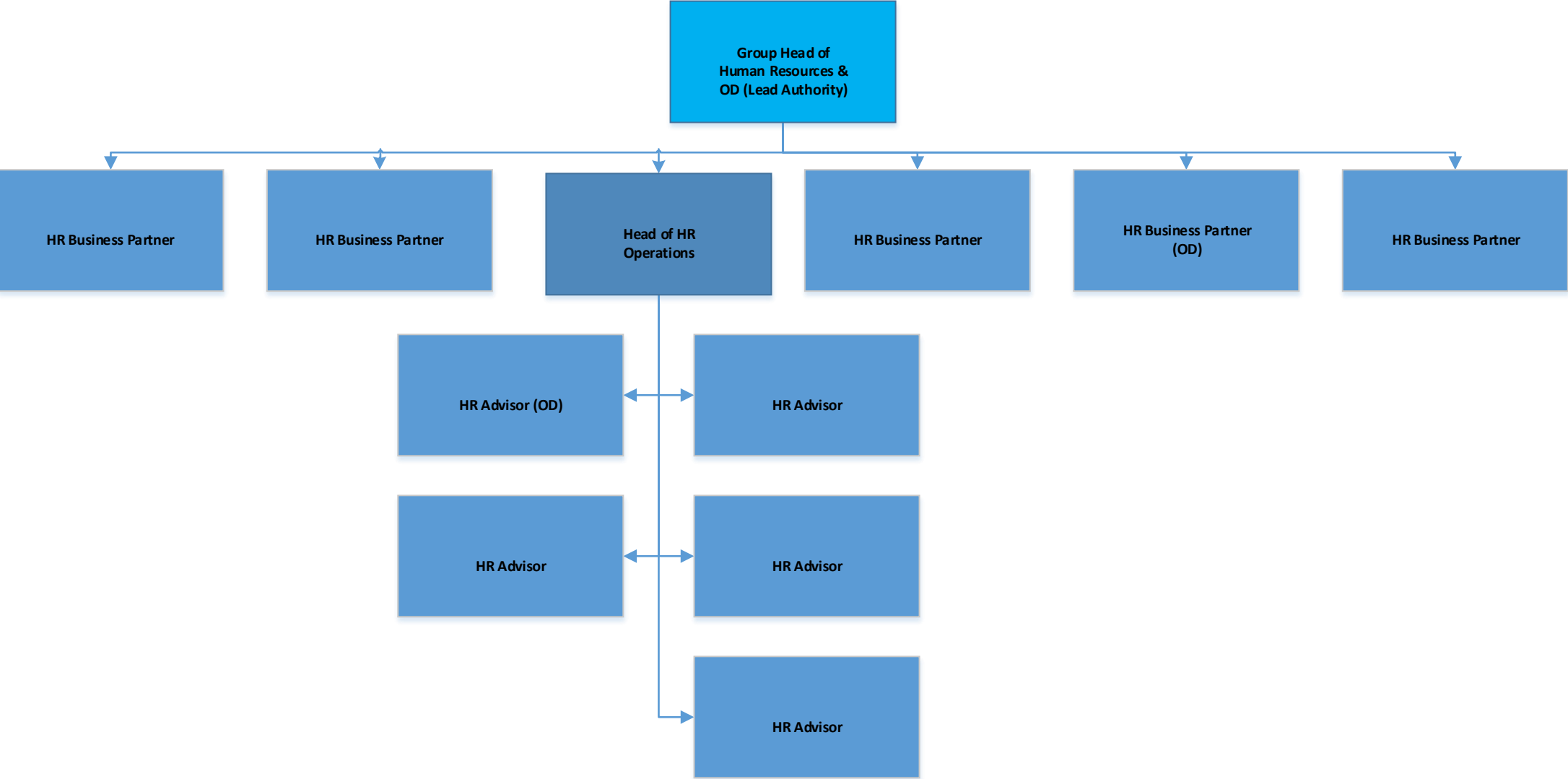
Democracy & Governance : Legal & Democratic Services



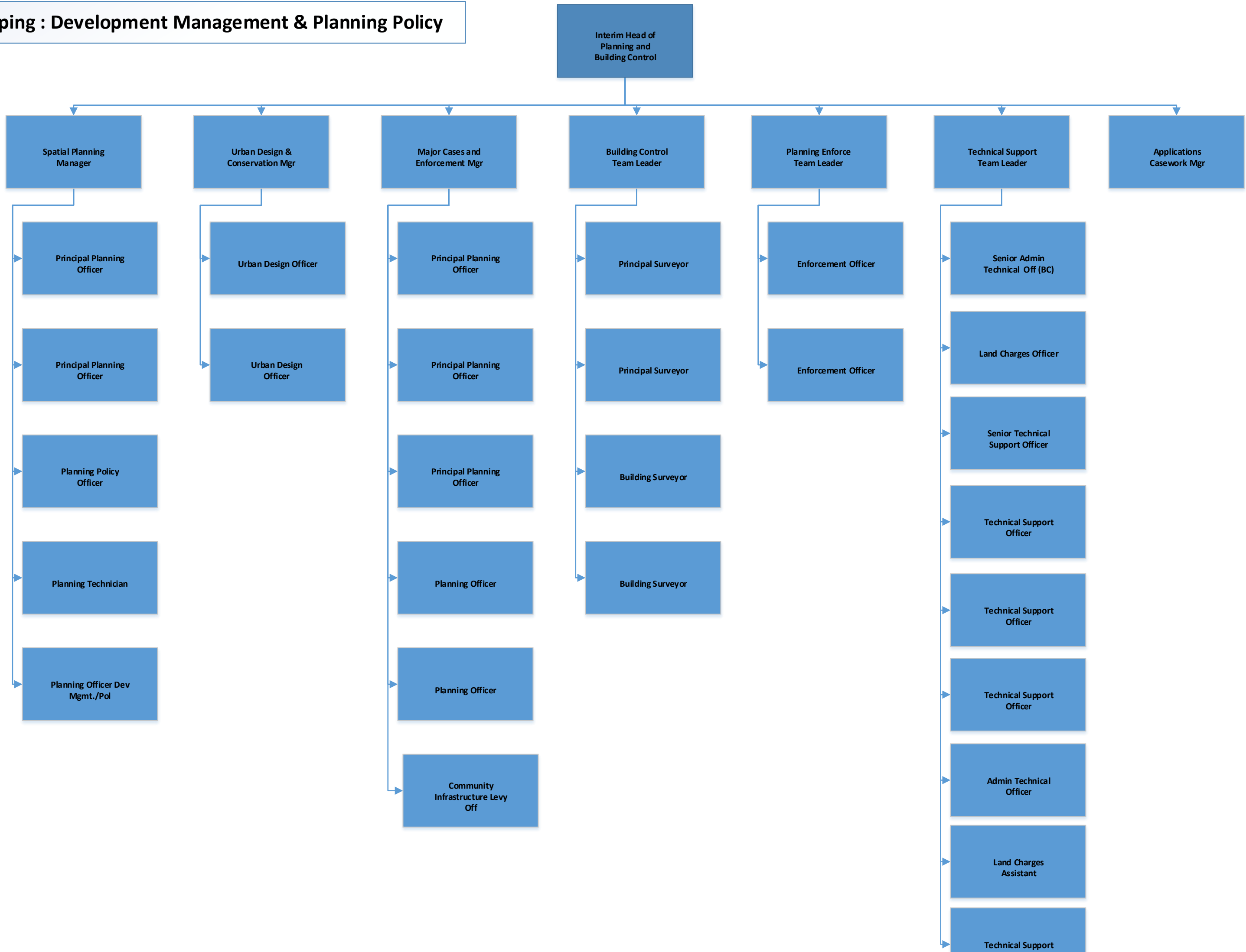
Enterprise Project Management Office (EPMO)



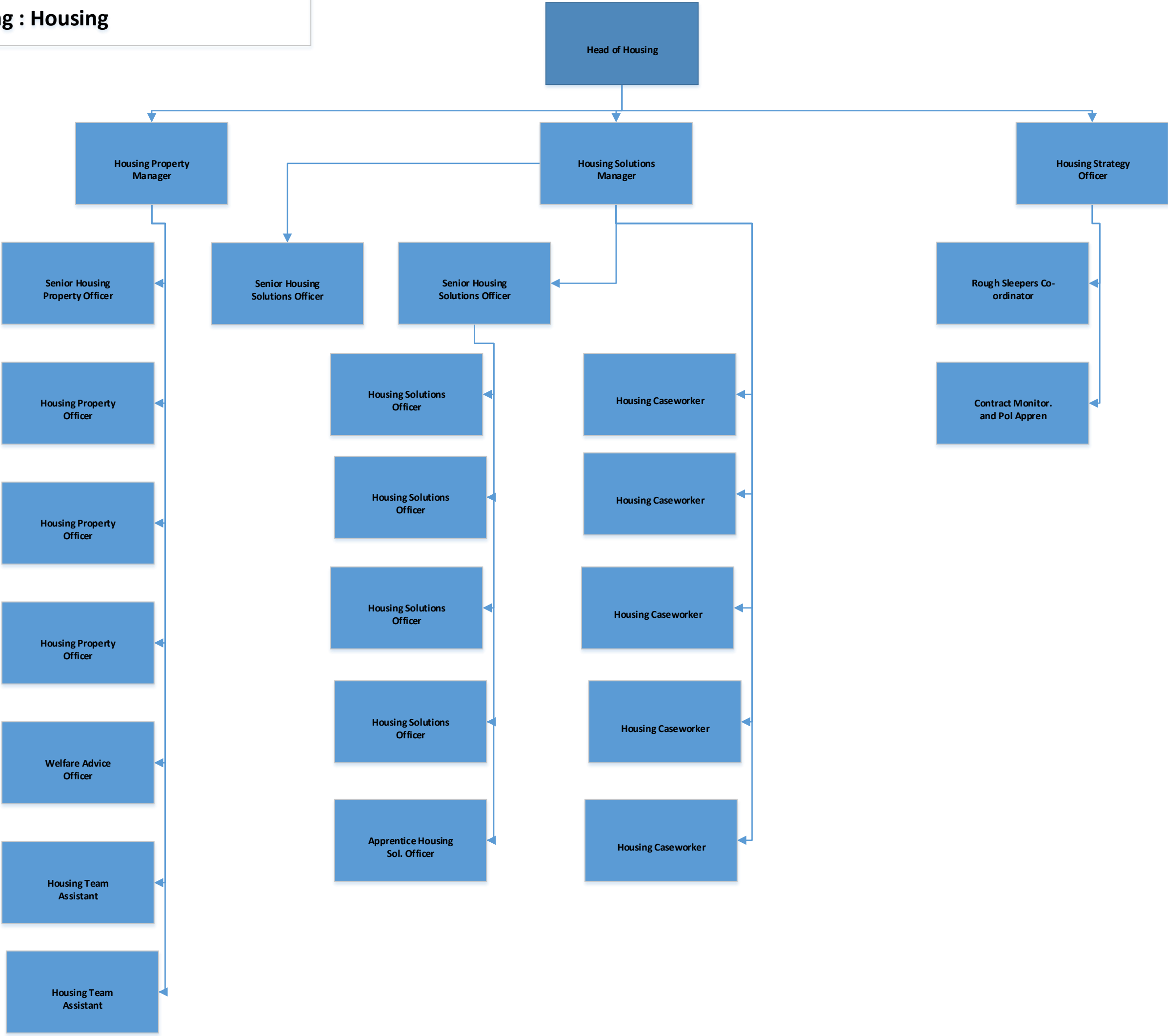
Human Resources



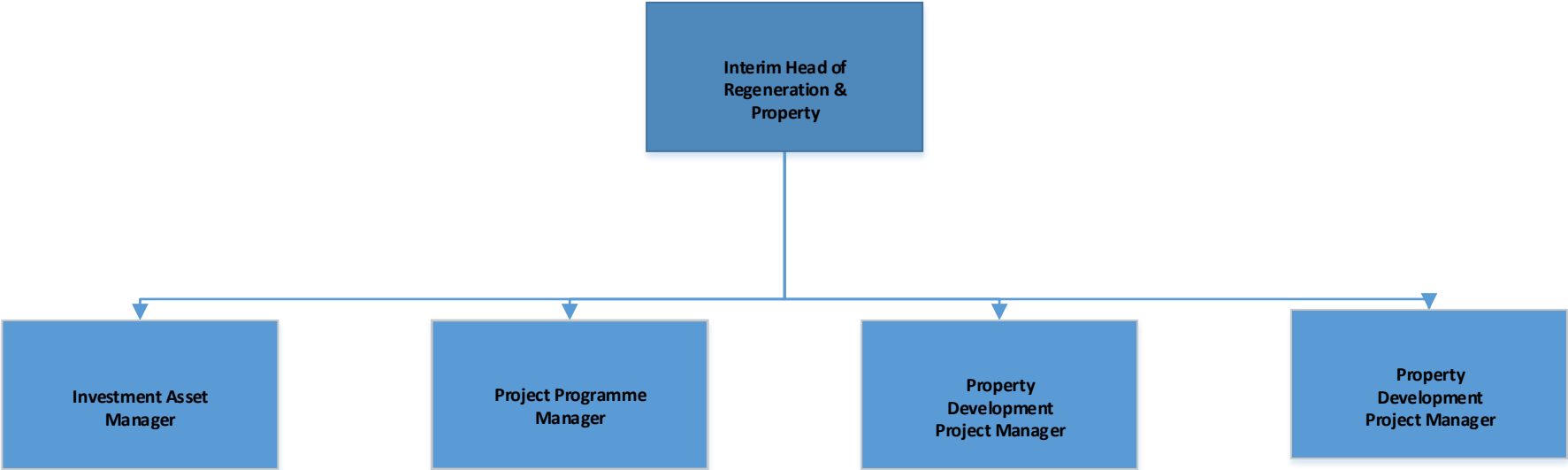
Place Shaping : Development Management & Planning Policy



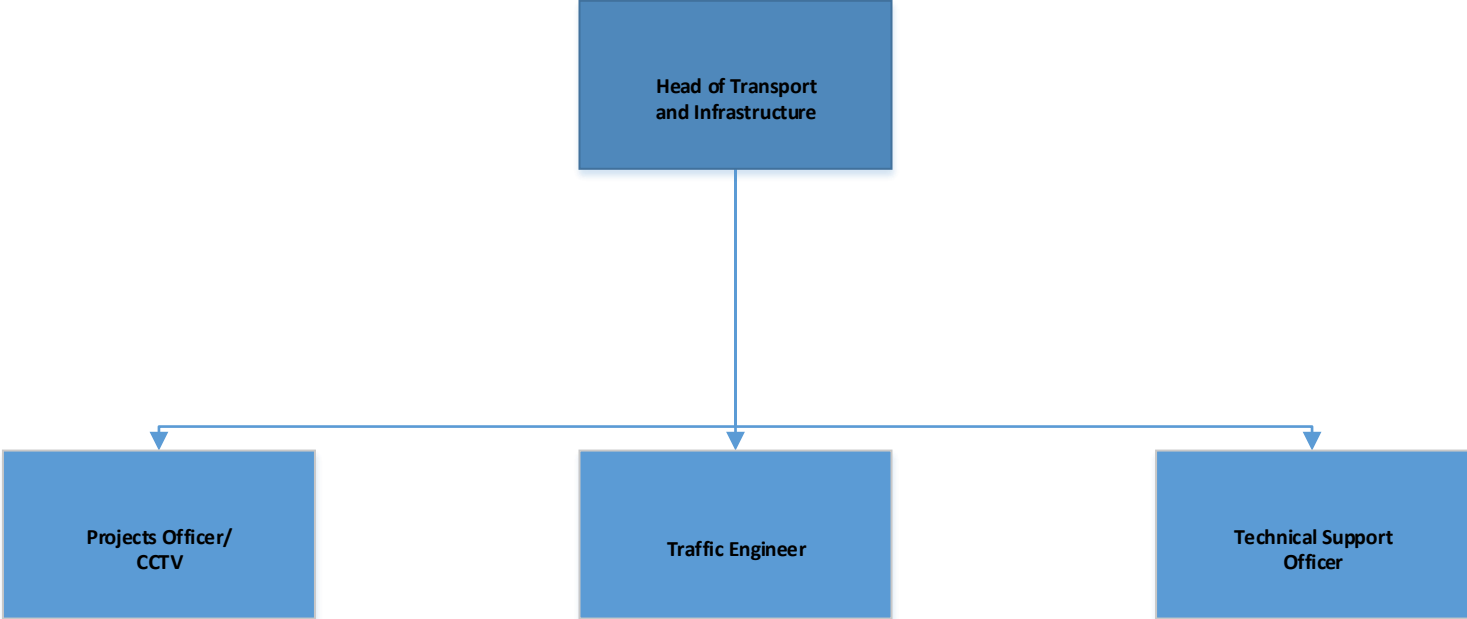
Place Shaping : Housing



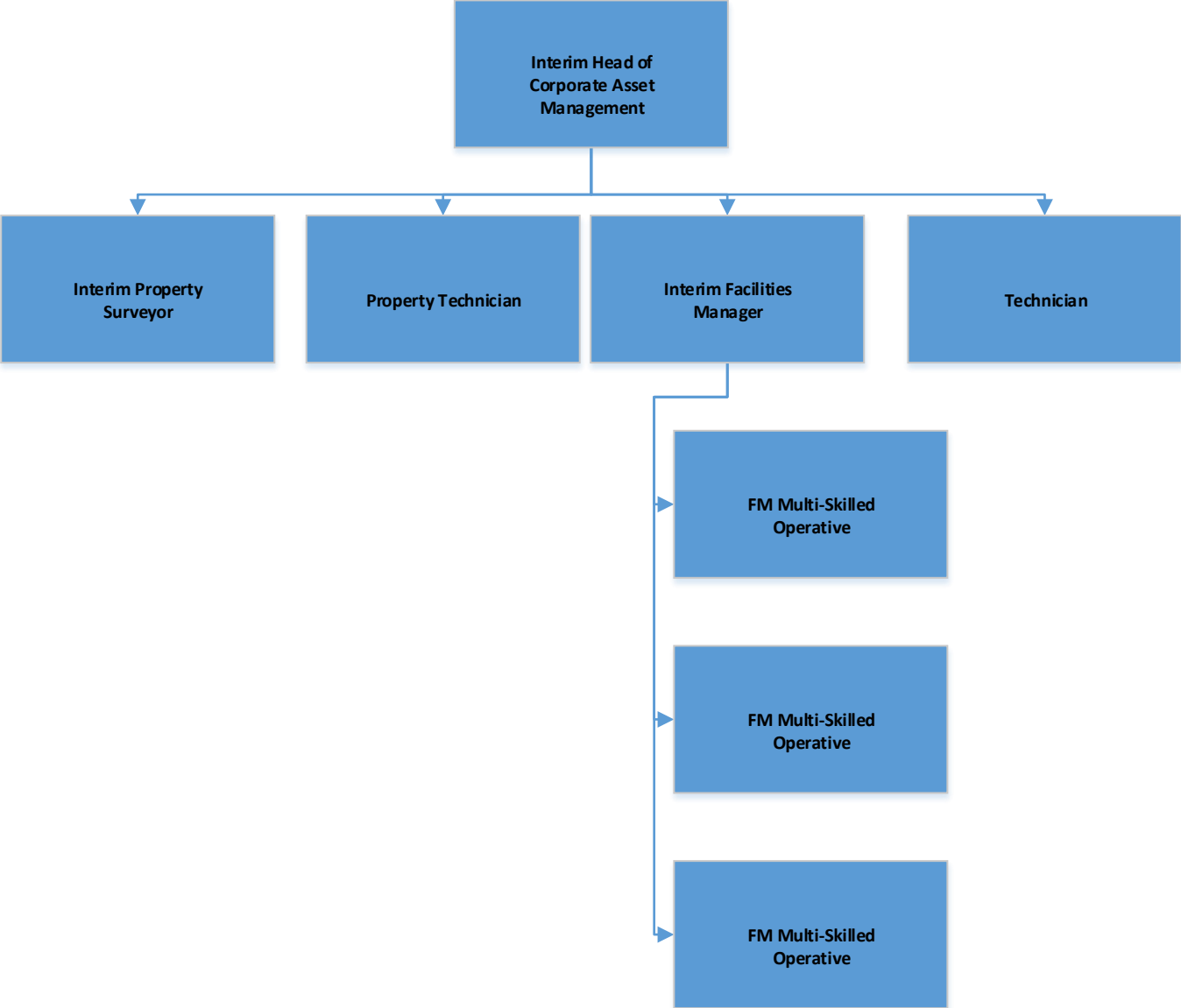
Place Shaping : Regeneration & Property



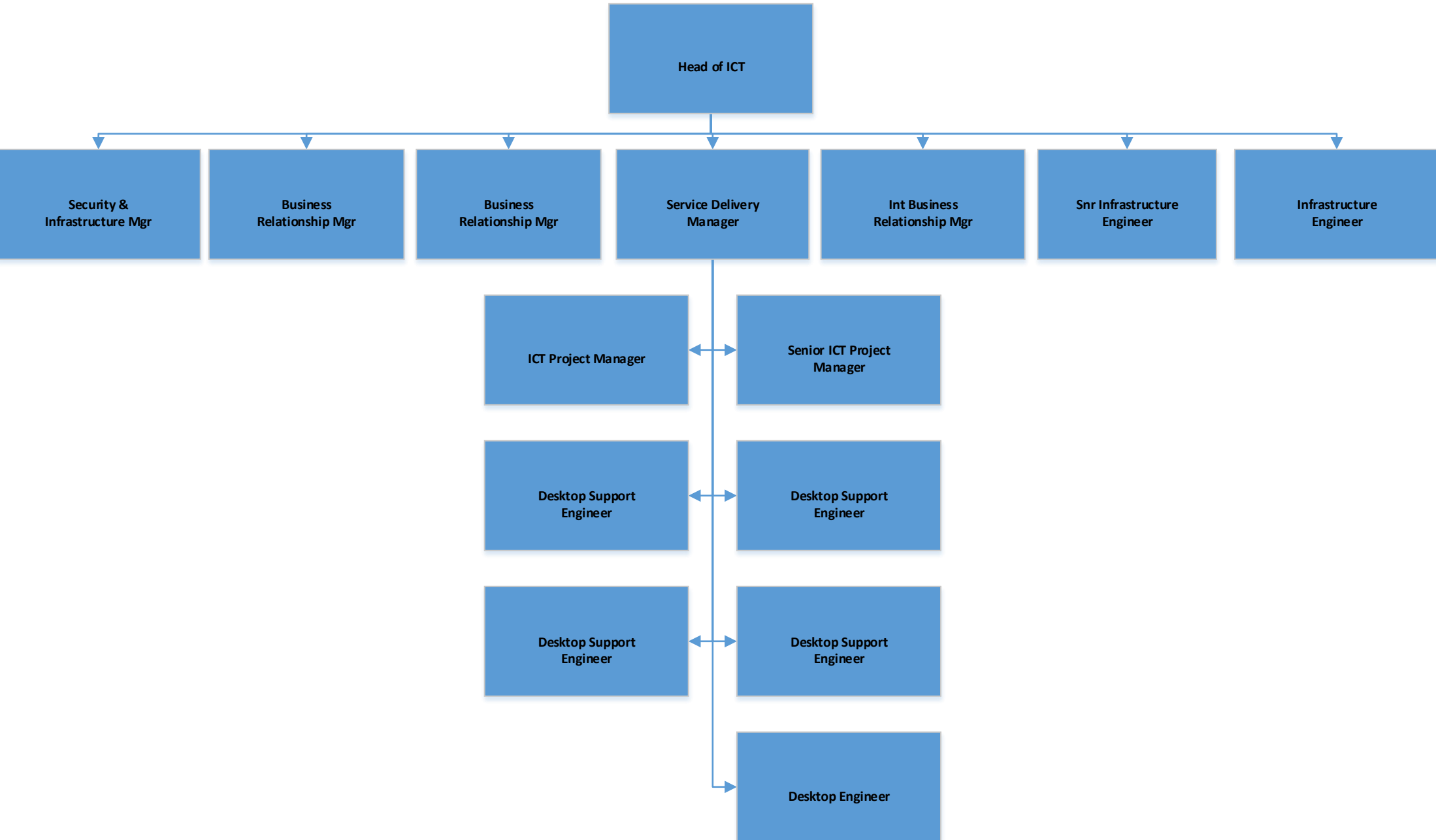
Place Shaping : Transport & Infrastructure



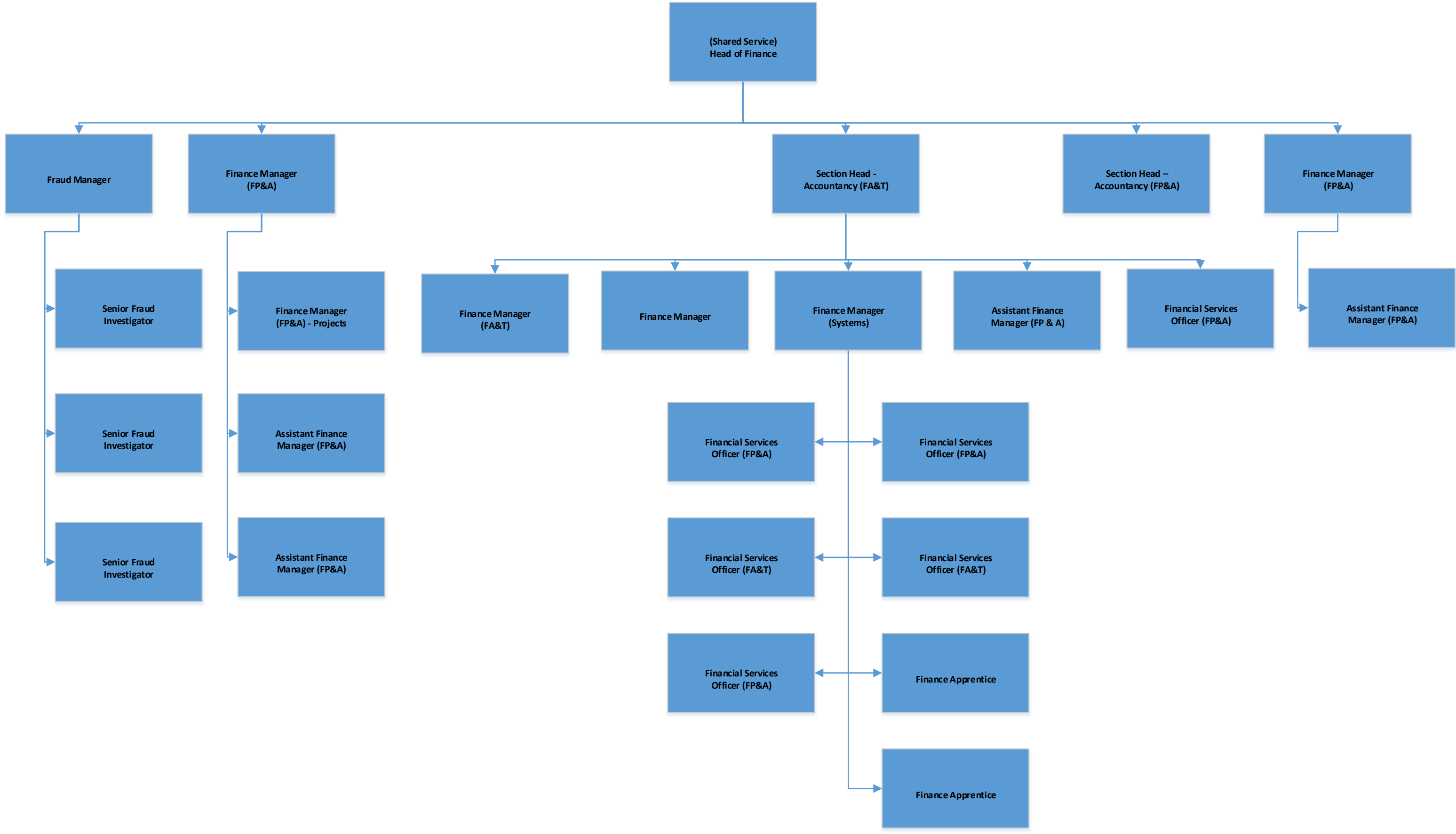
Service Transformation : Corporate Asset Management



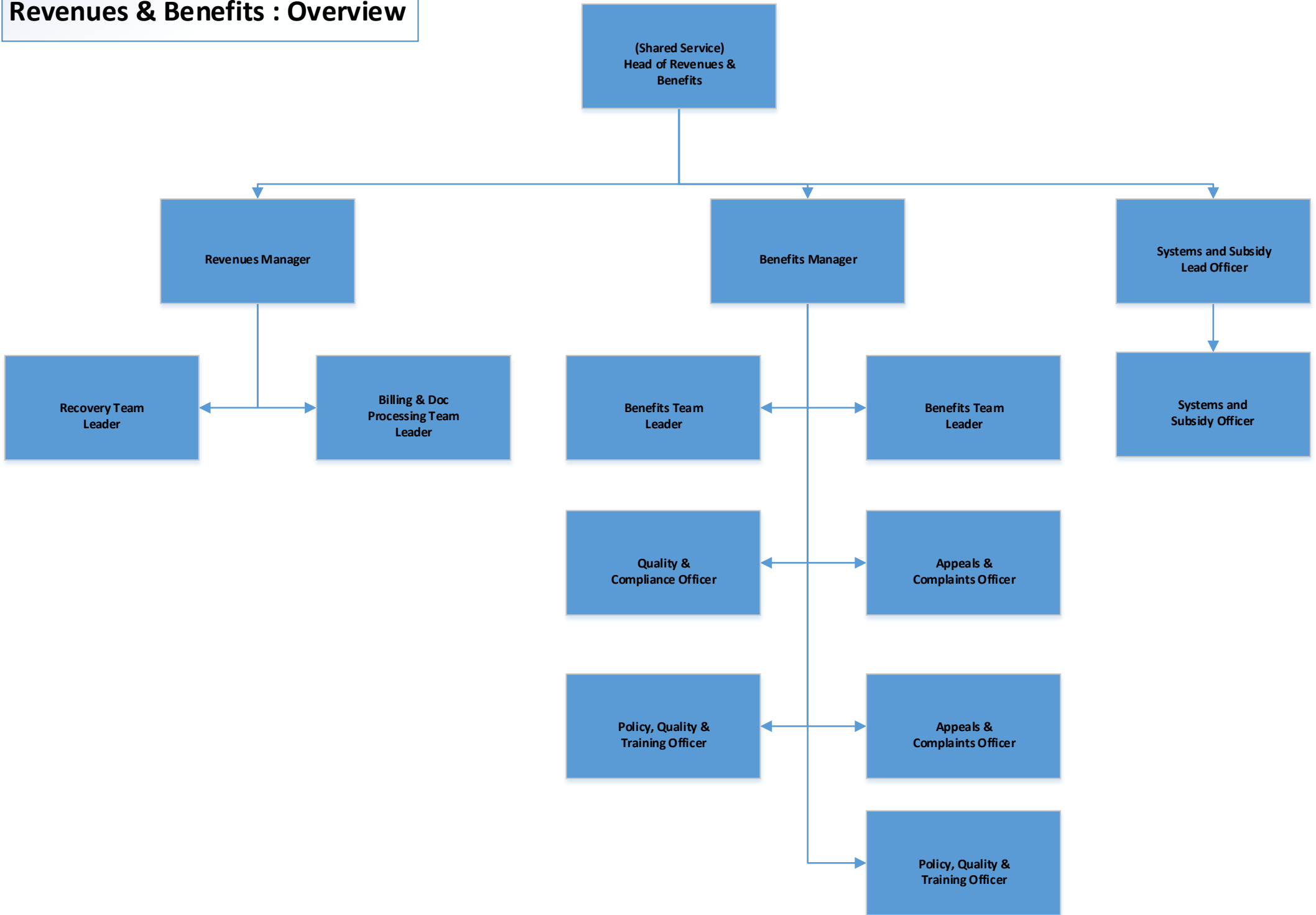
Service Transformation : ICT



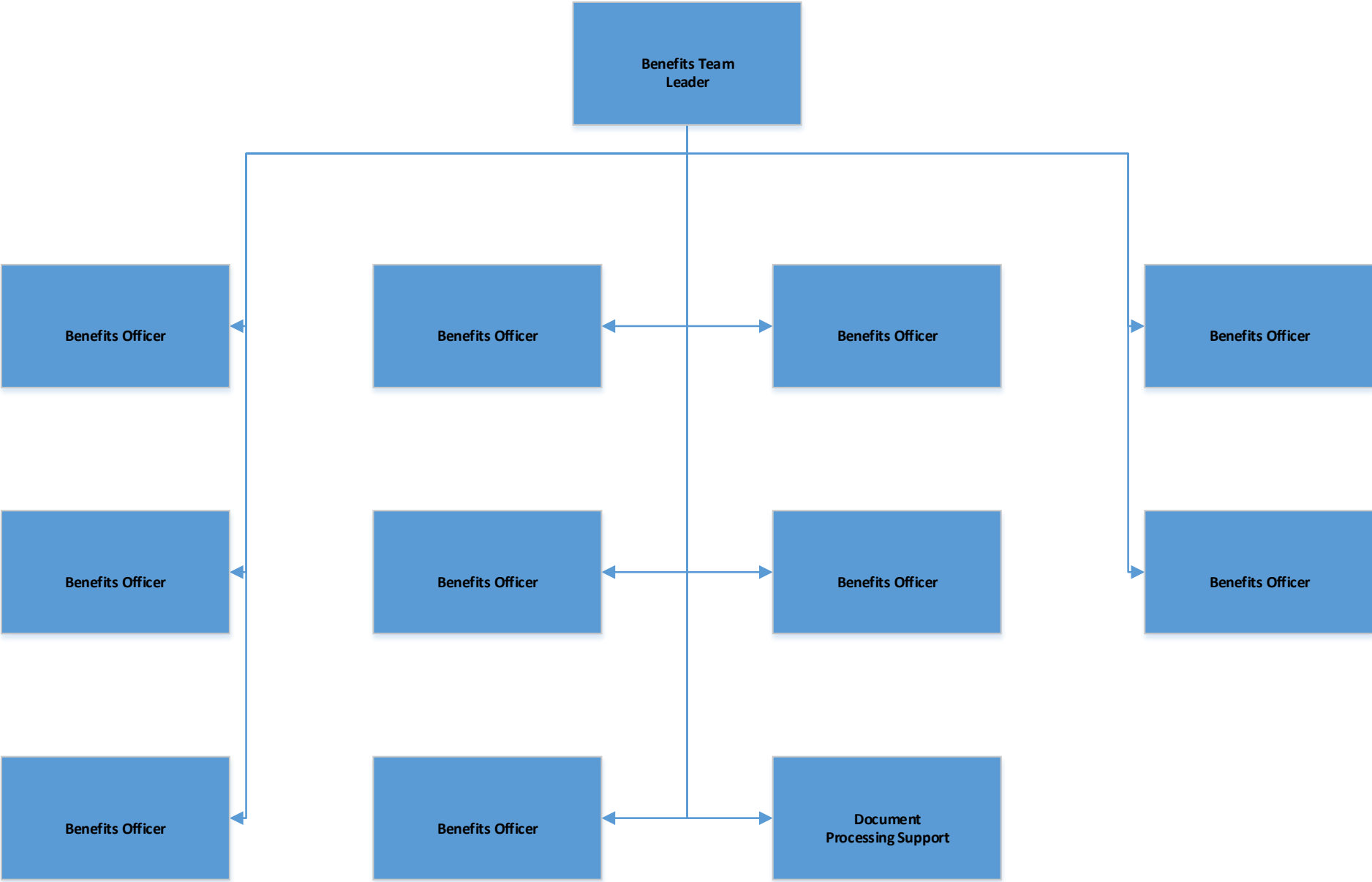
FINANCE & FRAUD



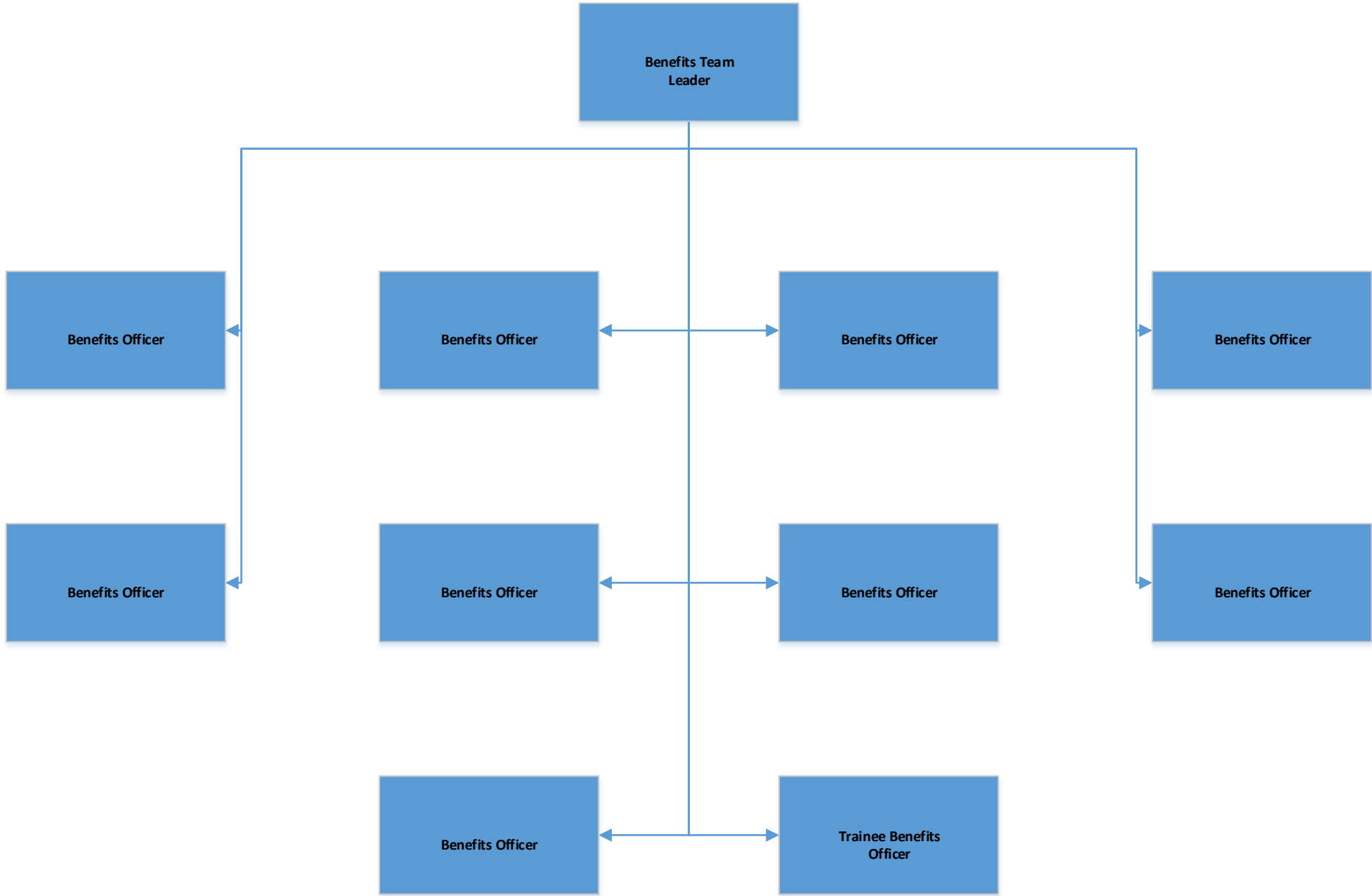
Revenues & Benefits : Overview



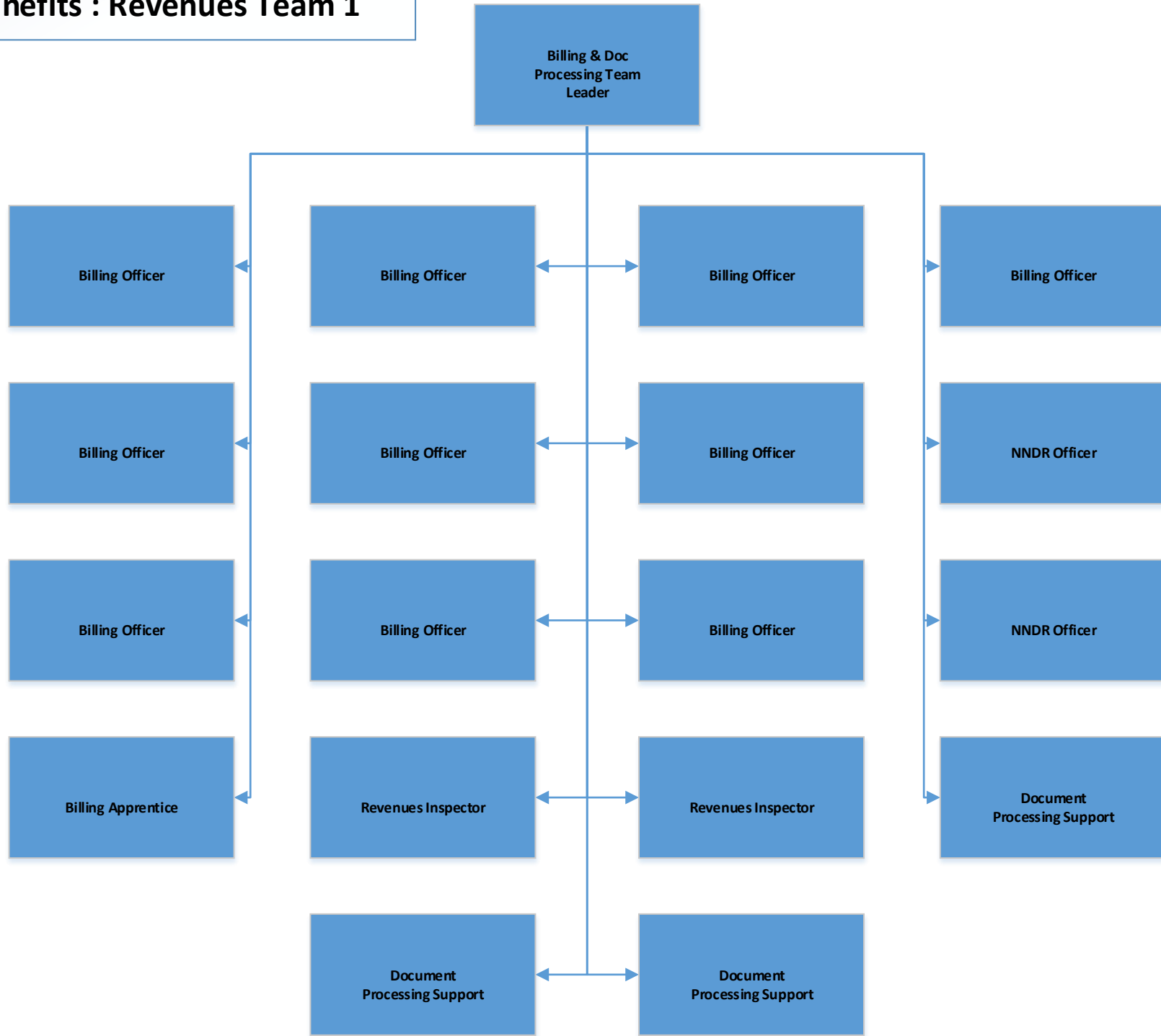
Revenues & Benefits : Benefits (Team 1)



Revenues & Benefits : Benefits (Team 2)



Revenues & Benefits : Revenues Team 1



Revenues & Benefits : Revenues Team 2

