

Watford Community Safety Partnership



**WATFORD
BOROUGH
COUNCIL**

What is the Community Safety Partnership?



Watford's Community Safety Partnership (CSP) is a multi-agency, four-tier organisation with one main focus - improve safety and reduce crime across the town.

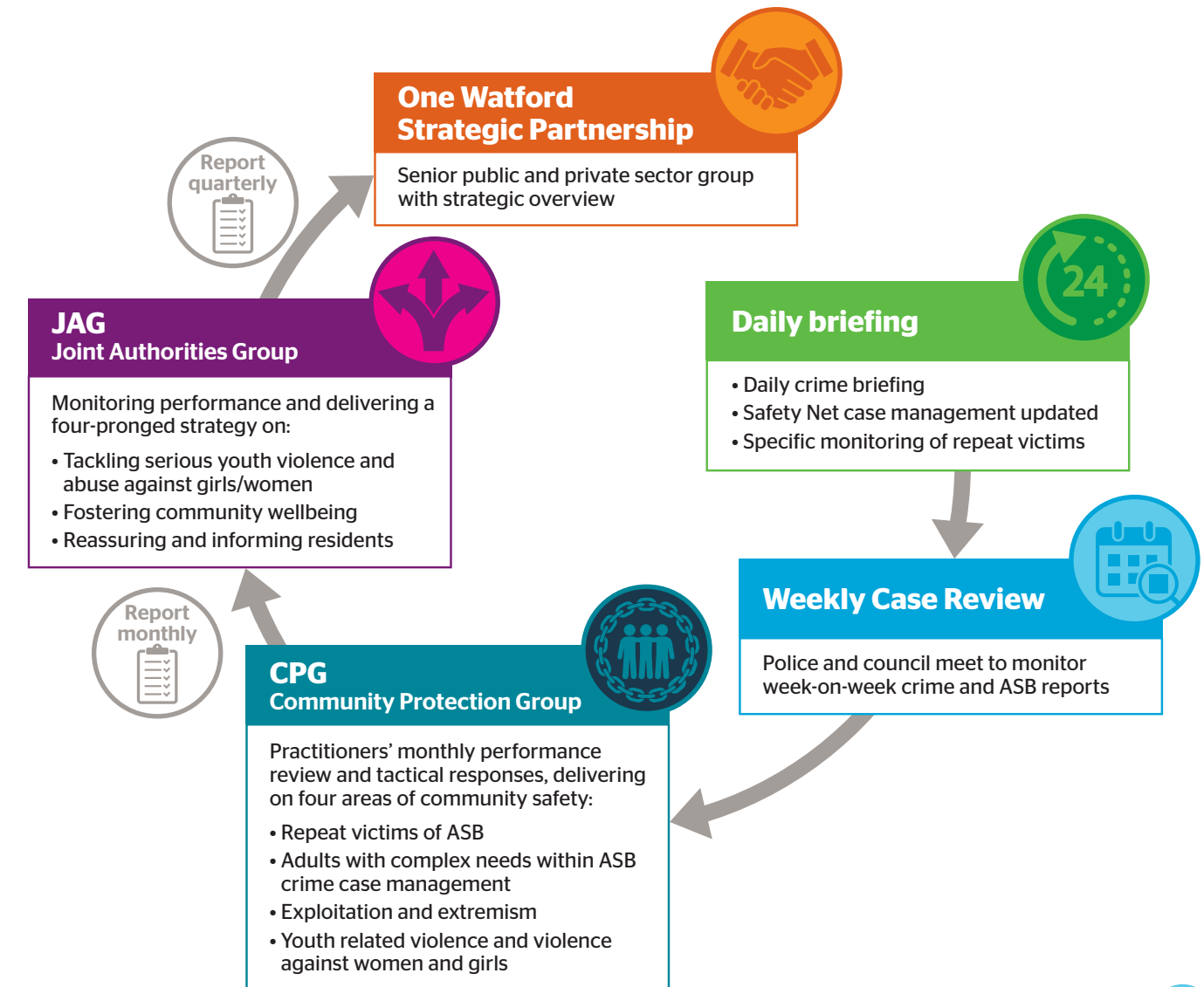
Leading the way is 'One Watford'. Chaired by the Elected Mayor, Peter Taylor, this is the town's key strategic partnership consortium, bringing together organisations from the private and public sector who play an important role in making Watford a great place to live, work and visit. They meet quarterly to agree and monitor delivery of the strategic objectives for the town, including the community safety agenda.

Beneath 'One Watford' sits the Joint Authorities Group (JAG). Using crime data from the previous 12 months, this group reviews the local crime profile to identify any specific emerging issues. This intelligence is then used to create an effective Community Safety Plan that mitigates risk and threats in the town.

The JAG also shares this with the Community Protection Group (CPG), comprising over 30 experts in community safety, housing, safeguarding, law enforcement, health and community support, all working together to resolve issues and meet the strategic objectives. The CPG seeks to reduce the impact of crime and ASB and to safeguard the most vulnerable, by sharing information to enact the strongest partnership response. It is the longest running group of its kind in the county and has the largest membership.

Daily briefings and a more in depth weekly one between the police and Watford Borough Council makes up the fourth tier.

Watford Community Safety Partnership reporting structure



Crime and Anti-Social Behaviour (ASB) in Watford

Watford is a thriving town, located some 15 miles north of central London.

At just 8 sq miles, with a population of just over 102,000, Watford is already one of the most densely populated non-metropolitan boroughs in the country.

The town is not only home to a young and growing population, it is also a destination for around half a million people from neighbouring boroughs, who use the town as a shopping, transport, and entertainment hub.

£%

There is significant investment and development in the town which means it is changing dramatically. The town already has a bustling day and night-time economy, all of which will be enhanced by this growth and investment.

In addition, its population is 102,300 and set to rise further

It is also one of the most connected towns in Britain, with underground and overground main line services into the town from the capital, and good access to the M25.

These positive advances will help the town continue to flourish but there is also the potential for additional crime and ASB.

The significant and increasing numbers of visitors in particular has a clear skewing effect on recorded crime and ASB when set against the 'per head' population of the town. In short, the crime profile for the town is very much affected by those not resident within it.

How we measure and monitor crime



Daily crime reports from the previous 24 hours are reported by the Police Safer Neighbourhood's Inspector at the start of each working day to Watford Borough Council's Community Safety Manager who then evaluate the impact of these crimes on the community.

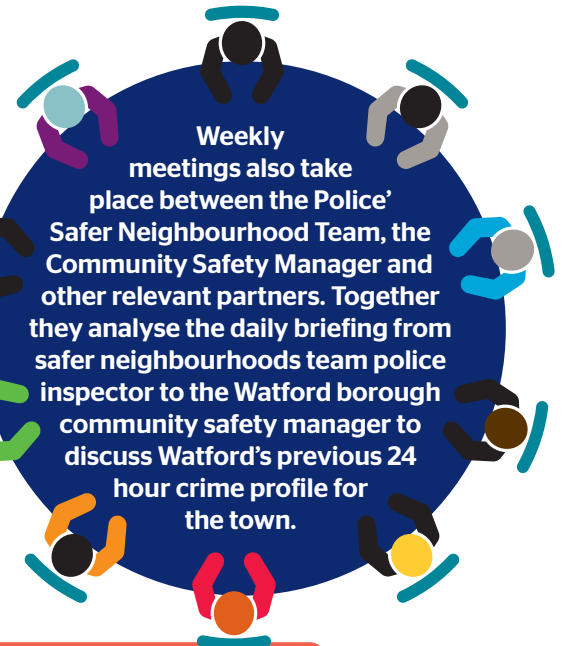
Their analysis is passed to the Community Protection Group (CPG) at the end of each month.

Where an individual is identified to be at very high risk from further victimisation or a criminal danger to others, a specific professionals' meeting is held with all of the relevant agencies who have responsibilities for the individual.

This necessary act of immediate intervention and support work is aimed to prevent the risk from escalating.

These activities allow the community safety agenda to remain responsive, and enables further investigation and support of police actions through the partnership.

The Community Safety Partnership puts this challenge into context by measuring the 'weight of footfall' and the impact that this has on the crime figures and assesses the overall risk.



Our priorities

Our priorities are based on extensive consultations within the partnership and the analysis of the crime data within the strategic assessment risk matrix. Our four priority areas are:



Serious violent crime

Youth violence related to drug usage and in particular county lines - the criminal exploitation of vulnerable youths to deal drugs. Adult violence related to robbery, drug trafficking, drug possession, cuckooing and incidents of this type which have a disproportionate impact upon the community in relation to feelings of safety and public confidence.



Violence against women and girls

Serious sexual assault, rape, violence, all of which have a disproportionate impact in relation to feelings of safety and public confidence within the town.



Community wellbeing

Domestic Abuse Crime/Non Crime, ASB and Hate Crime. This work led by front line engagement with the community, analytics (including ECHO) and public feedback where the aim is to prevent and resolve emerging issues and community tensions.



Reassure and inform

Communication and engagement with the community to ensure they are objectively informed of the criminal activity, they can express their concerns and be reassured by the response and actions taken by the CSP.



Our strategic objectives

The Community Safety Partnership's strategic objectives for 2022 - 2025, are:

- To reduce the impact of ASB and crime across the town, with a focus on tackling violent youth crime and its connections to the distribution of drugs through county lines, and intervention against knife carrying by known perpetrators
- Tackle violence against women and girls by supporting multi-agency projects and interventions to promote feelings of safety
- Support and promote the police reporting system - ECHO - and evaluate this in terms of its effectiveness at promoting community concerns and tackling them with a partnership approach
- Promote its work with a programme of positive communications that reassure and inform the public. This will increase public engagement with consultations on the crime and disorder profile for the town



Accountability and reviewing of the partnership's work – 'The community trigger'

Beyond the quarterly reports made to One Watford and the overall crime figures for the year recorded within the strategic assessment document, the CSP is also open to review from the public via the Community Trigger.

This is a process by which any member of the public can request a formal review of actions taken by the partnership in relation to a case of crime or ASB which the person feels has not been dealt with properly.

This formal process supports the restorative justice and ensures accountability for the work of the CSP. CPG is responsible for reviewing all Community Triggers and responding to the complaint formally, ensuring the process is accurate and accountable.

For further information on the CSP and the legislation it uses to deliver community safety visit: watford.gov.uk/crime-safety/community-safety-partnership

Key achievements

- Tackling the issues raised by the public through the CSP system of reporting and case management, reports to the police of ASB have reduced by 66% over the past 10 years
- From 2019 - 2022 there was an historic reduction in ASB crime and disorder across the town, the partnership will strive to maintain these notable reductions
- The Watford CSP actively promotes and carries out the largest number of community triggers in the county supporting repeat victims of crime and ASB to find long term resolutions
- The CSP maintains direct contact with the public through regular partnership community days



Work with us to keep Watford safe

If you live, work or study in Watford, we want to hear your thoughts on what matters to you. Your feedback will shape our policing priorities to help keep our town safe and thriving.

To tell us how you feel go to:

<https://capture.rantandrave.com/s3/Watford>

or scan this QR code:

Powered by

echo
What matters most



HERTFORDSHIRE
CONSTABULARY




Hertfordshire


watford
community
housing

together a
SaferWatford
Watford Community Safety Partnership